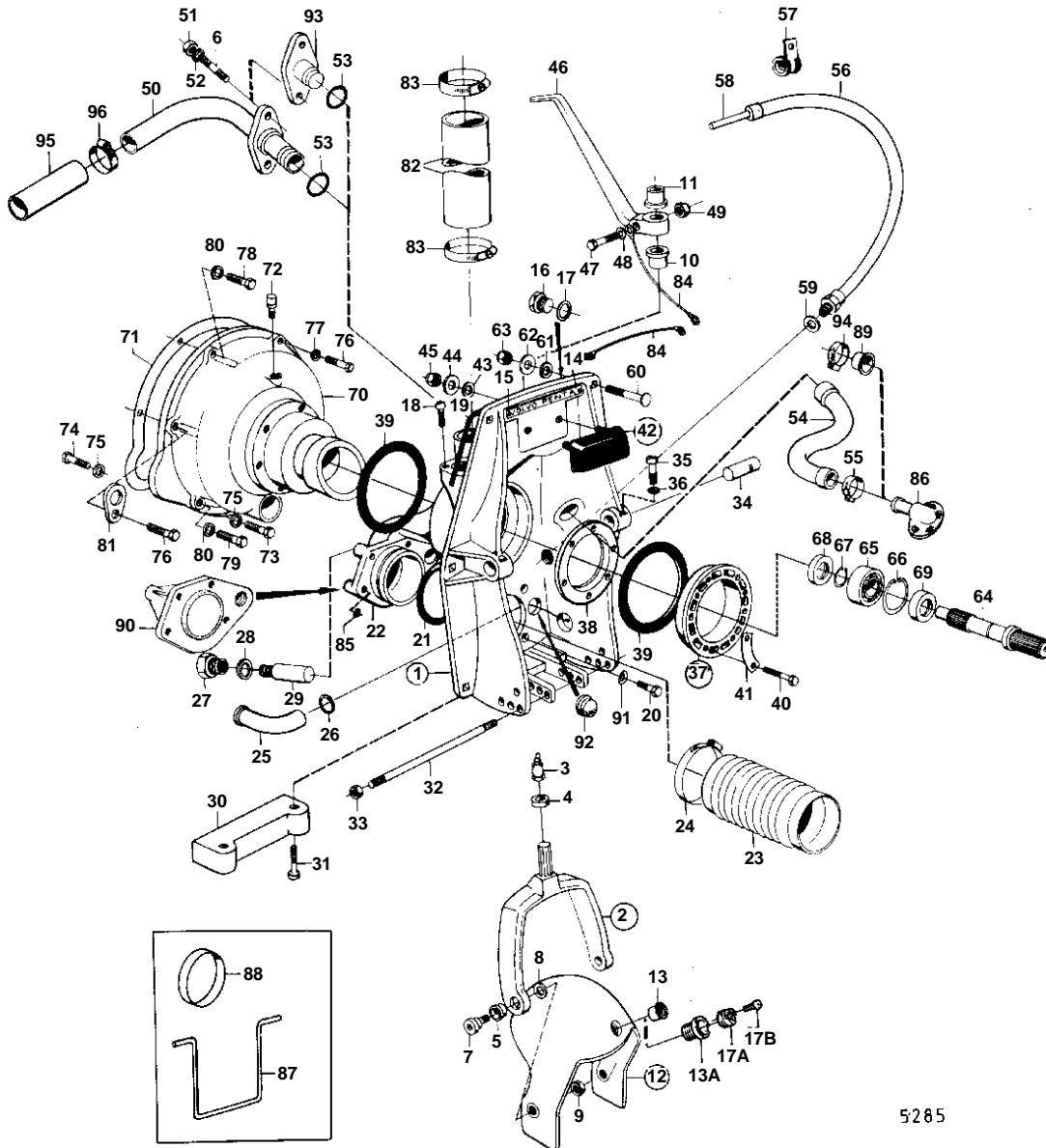


AQD21A



5285

AQD21A

REF	PART NO.	QTY	DESCRIPTION	NOTES
1		1	SHIELD	REPLACED BY 1EA 875671, 1EA 851265, 1EA 851263, 2EA 941807, 1EA 875531, 1EA 839459, 1EA 940097, 1EA 955537.
	875532	1	Tensioning ring	FOR STEERING YOKE AND LEVER WITH SPLINES., REPLACED BY 1EA 875671 1EA 851265 1EA 851263 2EA 941807., MOXXXX/80275-XXXX/187079
	875671	1	Shield	MOXXXX/187080-
2		1	• STEERING YOKE	EARLY TYPE STEERING YOKE AND LEVER WITHOUT SPLINES, REPLACED BY 1EA 839377, 1EA 832587, 1EA 832586, 1EA 940162
	839377	1	• Steering yoke	FOR STEERING YOKE AND LEVER WITH SPLINES.
3	914169	1	• • Lubricating nipple	
4	814359	1	• • Ring	
5		2	• • Bushing	EARLY TYPE
	814640	2	• • Bushing	LATE TYPE
6	941872	2	• Stud	
7	897798	2	• Shoulder screw	
8	897244	2	• Washer	
9	943152	2	• Nut	
10	897731	2	• Bushing	EARLY TYPE STEERING YOKE AND LEVER WITHOUT SPLINES, REPLACED BY 1EA 839377, 1EA 832587, 1EA 832586, 1EA 940162
	897731	1	• Bushing	FOR STEERING YOKE AND LEVER WITH SPLINES., LOWER
11		1	• Bushing	FOR STEERING YOKE AND LEVER WITH SPLINES., UPPER
12	814684	1	• Protective helmet	MO-XXXX/187079
	851267	1	• Protective helmet	MOXXXX/187080-
13		1	• • Bushing	FOR 1/2"- 13UNC SCREW.
13A	851262	1	• • Bushing	FOR BEARING PIN WITH 2 BOLTS.
14	832608	1	• Plate	
15	804269	2	• Drive screw	
16		1	• Plug	MOXXXX/94050-
17	897745	1	• Gasket	MOXXXX/94050-
17A	852705	1	Pivot pin, BEARING TAP	(851263)
17				MOXXXX/187080-
				REPL BY 852705
17B	941807	2	Hex. socket screw	MOXXXX/187080-
18	956568	2	Hex. socket screw	SEE GROUP 9
19	897726	1	Sealing strip	
20	959967	4	Hexagon screw	
21	925256	1	O-ring	
22	897782	1	Exhaust grommet	
23	897631	1	Exhaust bellows	
24	961675	2	Hose clamp	
25	897773	1	Water outlet pipe	
26		1	Washer	
27		1	Plug	
28	897745	1	Gasket	
29		1	ZINC ELECTRODE	EARLY TYPE REPLACED BY 1EA 832598, 2EA 959438.
30	832598	1	Zinc anode	
31	959438	2	Hex. socket screw	
32	814301	1	Adjusting pin	
33	814357	2	Flange nut	
34	897831	2	Pivot pin	
35	941873	2	Hex. socket screw	
36	941670	2	Washer	
37	826941	1	Mounting kit	
38	813964	1	• Spacer ring	LATE TYPE
39	813967	2	• Rubber ring	
40	191844	6	• Hexagon screw	
41	806624	3	• Striker plate	
42	875379	1	Rubber cushion	
43	832565	2	• Gasket	
44	960142	2	• Washer	
45	950364	2	• Lock nut	
46		1	Spindle arm	EARLY TYPE STEERING YOKE AND LEVER WITH SPLINES.
		1	Spindle arm	FOR STEERING YOKE AND LEVER WITH SPLINES.

AQD21A

REF	PART NO.	QTY	DESCRIPTION	NOTES
47		1	Screw	EARLY TYPE STEERING YOKE AND LEVER WITH SPLINES.
	940162	1	Hexagon screw	FOR STEERING YOKE AND LEVER WITH SPLINES.
	955536	1	Hexagon screw	LATE TYPE WITH GROUND CABLE ON STEERING LEVER.
48	940097	1	Washer	LATE TYPE WITH GROUND CABLE ON STEERING LEVER.
49	950386	1	Lock nut	EARLY TYPE STEERING YOKE AND LEVER WITH SPLINES.
50	826819	1	Grommet	
51	950352	2	Lock nut	
52	955893	2	Washer	
53	925063	1	O-ring	
54		1	Hose	
55	961668	2	Hose clamp	
56	839091	1	Protecting hose	
57	952635	1	Clamp	
58		X	CONTROL CABLE	SEE GROUP 9
59	897745	1	Gasket	
60	943426	6	Screw	
61	850418	6	O-ring	(814166)
62	190878	6	Washer	
63	940176	6	Hexagon nut	
64		1	Shaft	
65	11012	1	Ball bearing	
66	914529	1	Snap ring	
67	914459	1	Snap ring	
68	804207	1	Sealing ring	
69	946242	1	Sealing ring	
70		1	Flywheel housing	
71	826765	1	Gasket	SEE GROUP 2A
72		1	Lubricator	
73	940142	2	Hexagon screw	L = 30 MM
74	955297	1	Hexagon screw	L = 25 MM
75	955894	3	Washer	
76	955318	1	Hexagon screw	S.B L = 30 MM
	955319	1	Hexagon screw	P L = 35 MM
77	955895	1	Washer	
78	959667	1	Hexagon screw	L = 50 MM SEE GROUP 2A
79		2	Hexagon screw	L = 70 MM SEE GROUP 2A
80	940280	3	Spring washer	SEE GROUP 2A
81		1	LIFT EYE	SEE GROUP 2A
82	952980	X	Hose	L = 170 MM SEE GROUP 2B
83	943480	4	Hose clamp	SEE GROUP 2B
84		X	CABLES AND CABLE TERMINALS	SEE GROUP 3
85	925055	4	O-ring	
86	851766	1	Hose connection	SEE GROUP 4C
87	897824	1	Transport lock	FOR TRANSPORT.
88	944738	1	Plug	FOR TRANSPORT.
89		1	Plastic plug	USED WHEN SEPARATE EXHAUST OUTLET AND WATER INTAKE IS INSTALLED., SEE GROUP 9
90		1	Seal flange	USED WHEN SEPARATE EXHAUST OUTLET AND WATER INTAKE IS INSTALLED., SEE GROUP 9
91	942336	4	Spring washer	USED WHEN SEPARATE EXHAUST OUTLET AND WATER INTAKE IS INSTALLED., SEE GROUP 9
92	814473	1	Rubber plug	USED WHEN SEPARATE EXHAUST OUTLET AND WATER INTAKE IS INSTALLED., SEE GROUP 9
93		1	Seal flange	USED WHEN SEPARATE EXHAUST OUTLET AND WATER INTAKE IS INSTALLED., SEE GROUP 9
94	961669	1	Hose clamp	USED WHEN SEPARATE EXHAUST OUTLET AND WATER INTAKE IS INSTALLED., SEE GROUP 9
95	941799	X	Hose	L = 450 MM
96	961669	2	Hose clamp	
	875192	1	Gasket kit	SEE GROUP 10